

GROOVE DESIGN OPTIONS

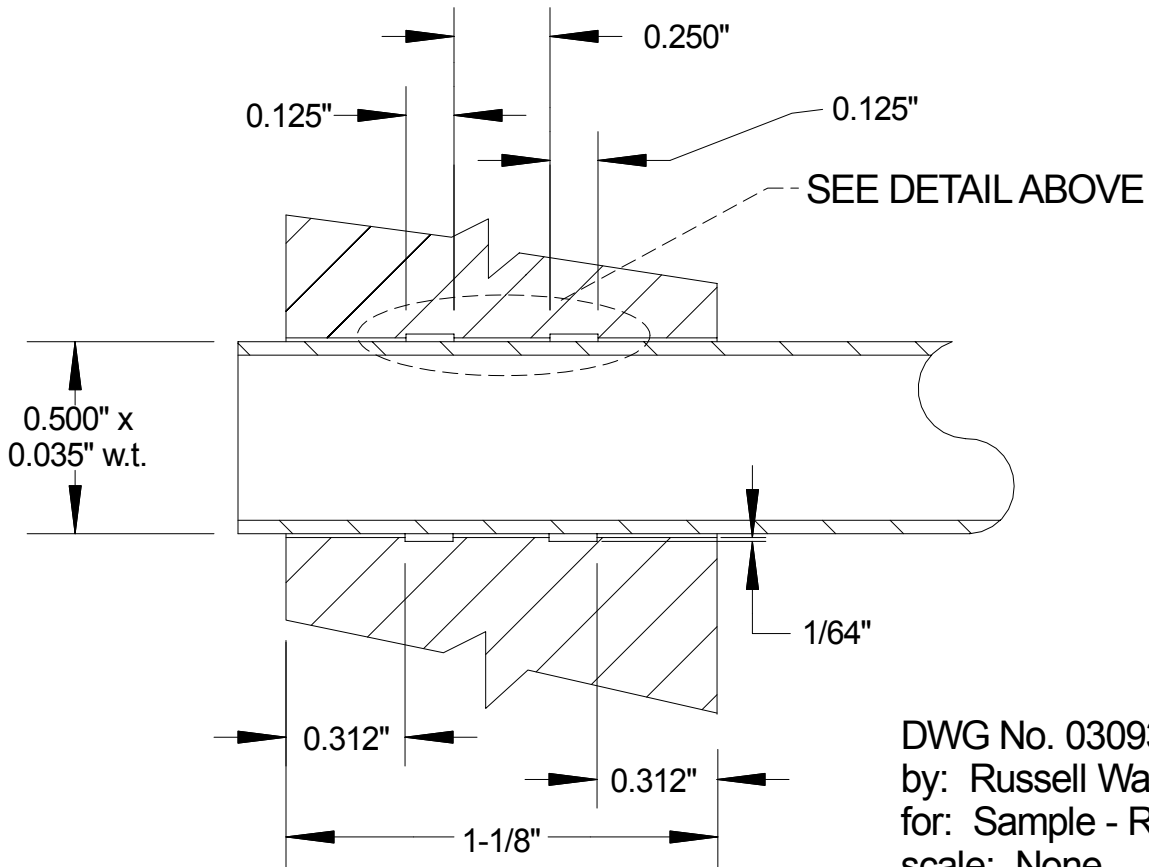
Groove width based on formula $W = 1.56\sqrt{Rt}$

where: W = groove width

R = mean tube radius

t = tube wall thickness

as cited in "A Working Guide To Shell & Tube Heat Exchangers"
pages 188-189, written by Stanley Yokell © 1990 McGraw-Hill.



DWG No. 03093001
by: Russell Wasson
for: Sample - Ref Only
scale: None