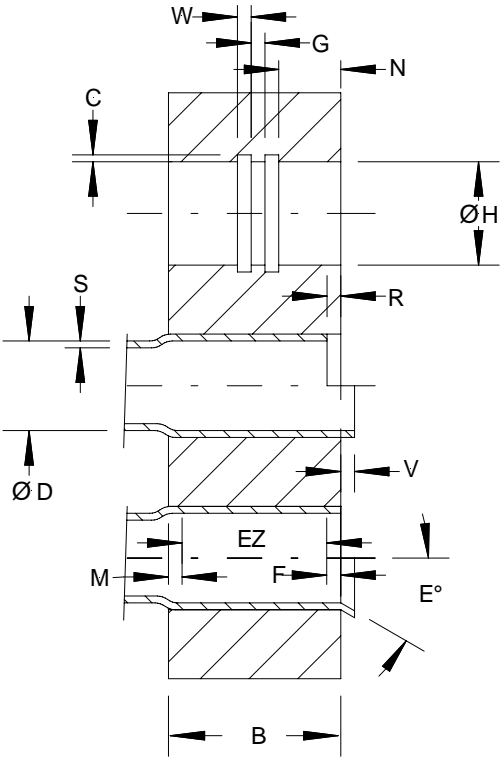


## DATA SHEET SUPPLEMENT

The Data Sheet Supplement form is provided as an aid and can be useful when gathering information for filling out the data sheet. Only the completed Data Sheet must be sent in.

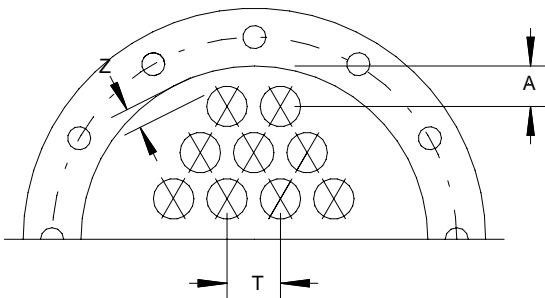


\_\_\_\_\_  
 Tube o.d. (D) \_\_\_\_\_  
 Tube wall thickness (S) \_\_\_\_\_  
 Tube material \_\_\_\_\_

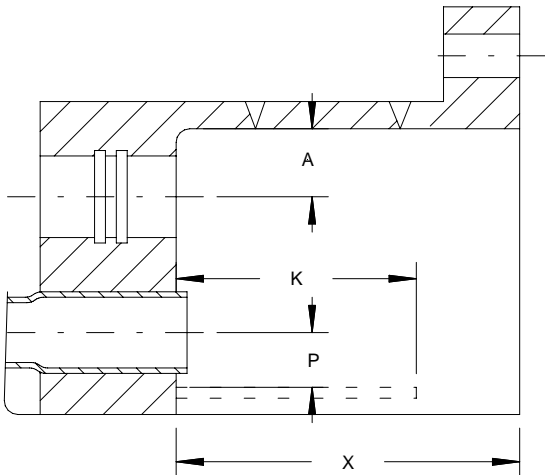
\_\_\_\_\_  
 Tube Hole Diameter (H) \_\_\_\_\_  
 Tube Sheet Thickness (B) \_\_\_\_\_  
 Tube sheet mat'l \_\_\_\_\_

\_\_\_\_\_  
 Quantity Grooves \_\_\_\_\_  
 Groove width (W) \_\_\_\_\_  
 Groove depth (C) \_\_\_\_\_  
 Gap between grooves(G) \_\_\_\_\_  
 Distance to 1<sup>st</sup> groove (N) \_\_\_\_\_

\_\_\_\_\_  
 Expansion zone (EZ) \_\_\_\_\_  
 E.Z. front setback (F) \_\_\_\_\_  
 E. Z. rear setback (M) \_\_\_\_\_  
 Tube protrusion(V) \_\_\_\_\_  
 Tube recess (R) \_\_\_\_\_  
 Bell/Flare angle ° (E) \_\_\_\_\_



\_\_\_\_\_  
 Hole center -to-center (T) \_\_\_\_\_  
 Center-to-shell (A) \_\_\_\_\_  
 Hole o.d. \-to-shell (Z) \_\_\_\_\_



\_\_\_\_\_  
 Center-to-shell (A)  
 (same as above)  
 Division plate height (K) \_\_\_\_\_  
 Hole Center to div. plate (P) \_\_\_\_\_  
 Depth of channel (X) \_\_\_\_\_